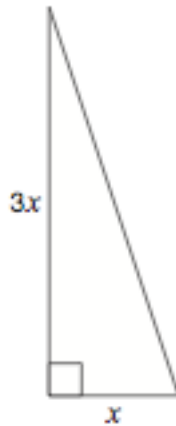


Grade 9 EQAO Questions (from the 2010-2011 Academic Assessment)

- align w/ Gr. 8 PA Variables, Expressions and Equations expectation(s)

- 4** Luke designs a garden in the shape of a right triangle as shown below.



The total area of the garden is 96 m^2 .

Hint:

$$A = \frac{1}{2}bh$$

Which is closest to the value of x in the diagram?

- a 6 m
- b 8 m
- c 32 m
- d 64 m

- 8** Karina has a job at a video store. The total she is paid each week is made up of an hourly rate plus \$14 for transportation.

One week, she works 20 hours and is paid \$215.

Which equation represents the relationship between Karina's total pay, P , in dollars, and the number of hours she works, n ?

- a $P = 10.75n + 14$
- b $P = 14n + 10.75$
- c $P = 10.05n + 14$
- d $P = 14n + 10.05$

- 12** The table below represents a linear relation.

Time, t	Distance, D
0	5
1	15
2	25
3	35
4	45

Which equation represents this relation?

- a $D = 5t$
- b $D = 10t$
- c $D = 10t + 5$
- d $D = 5t + 10$